

SINCE 1878

deltapump®

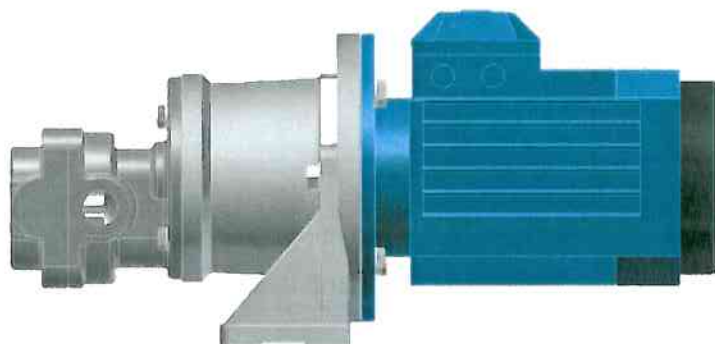
DELTA PUMP 589 OG 589X

DATABLAD

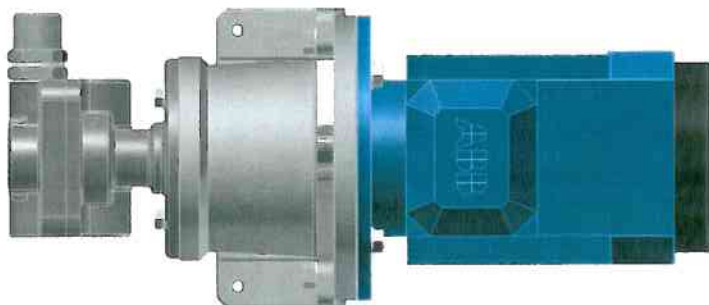
Materialer:

- Pumpehus: støpejern, EN-GJL-150
- Lokk: støpejern, EN-GJL-150
- Drivende tannhjul: stål, 42CrMo4
- Drevne tannhjul: stål, 42CrMo4
- Pakning lokk: O-ring
- Akseltetning: seal ring
- Lager: oljebronse
- Bolter: unbrako, svart DIN 12.9
- Brakett/fot: aluminium
- Kobling: fleks. kobling

Bruksområde: Olje og diesel



Figur: Deltapump 589X



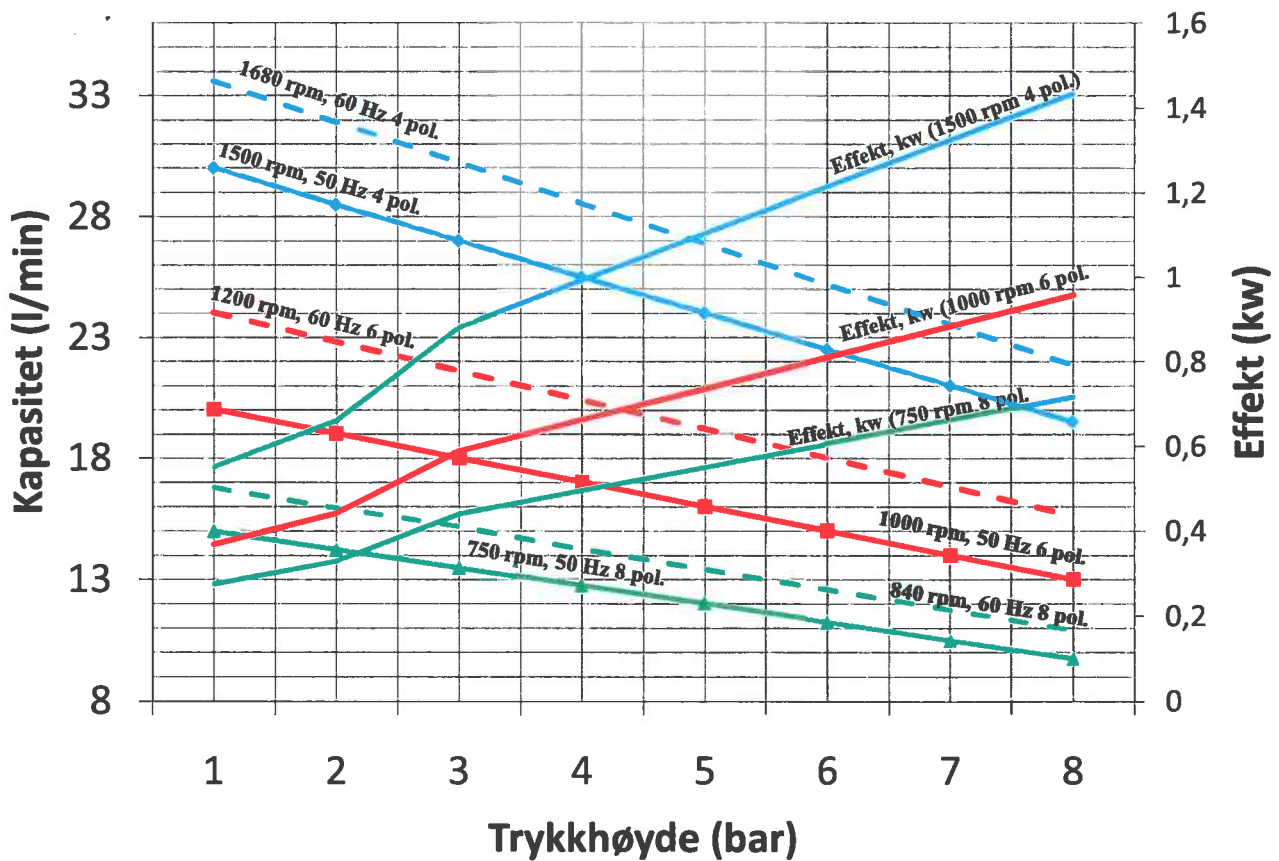
- ✦ Pumpen har en enkel og robust konstruksjon og med få deler
- ✦ Rørtilslutning: 3/4" BSP
- ✦ Pumpen tåler tørrkjøring
- ✦ Pumpen kobles direkte opp mot el. motor (4 – 6 – 8 polet). Alternativt; luft- eller hydr. motor
- ✦ Sikkerhetsventilen (X) står på pumpens sugeside og blir innstilt på 3 bar. Den kan enkelt etterjusteres
- ✦ Pumpen kan leveres uten innbygget sikkerhetsventil (X). Typebetegnelsen blir da Deltapump 589
- ✦ Pumpe uten ventil (X), gir valgfri gangretning
- ✦ Pumpearrangementet blir levert som vist på fig. Ved behov, kan pumpe og el. motor tilpasses i 4 ulike posisjoner, noe som en også kan gjøre med foten på pumpearrangementet. Dette for å gjøre tilkobling av rør og el. kabel lettere. Se eget vedlegg
- ✦ Pumpen krever ingen smøring og er vedlikeholdsfri
- ✦ Pumpen er primet med Jotun Bengalack 377 Metallgrå
- ✦ Datablad på el. motor, se eget vedlegg

SINCE 1878

deltapump®

Pumpekarakteristikk

Deltapump 589 og 589X



Pumpekarakteristikkene gjelder ved pumping av olje SAE 30. Ved høyere viskositet, må omdreiningstallet vurderes justert ned.

SINCE 1878

deltapump®

Deltapump 589 og 589X

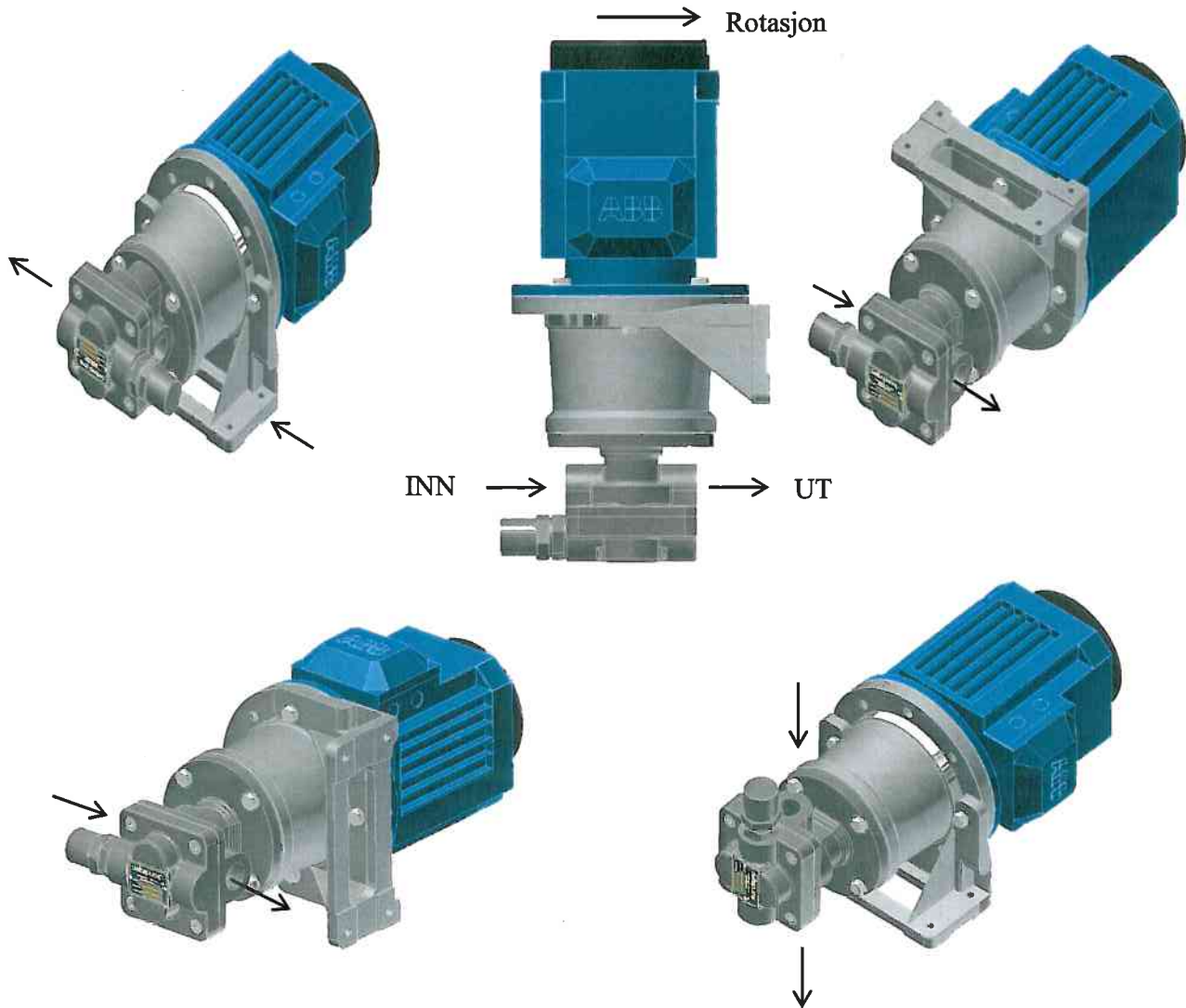
Pumpe og motor kan tilpasses i 4 ulike posisjoner, noe som en også kan gjøre med foten på pumpearangementet.

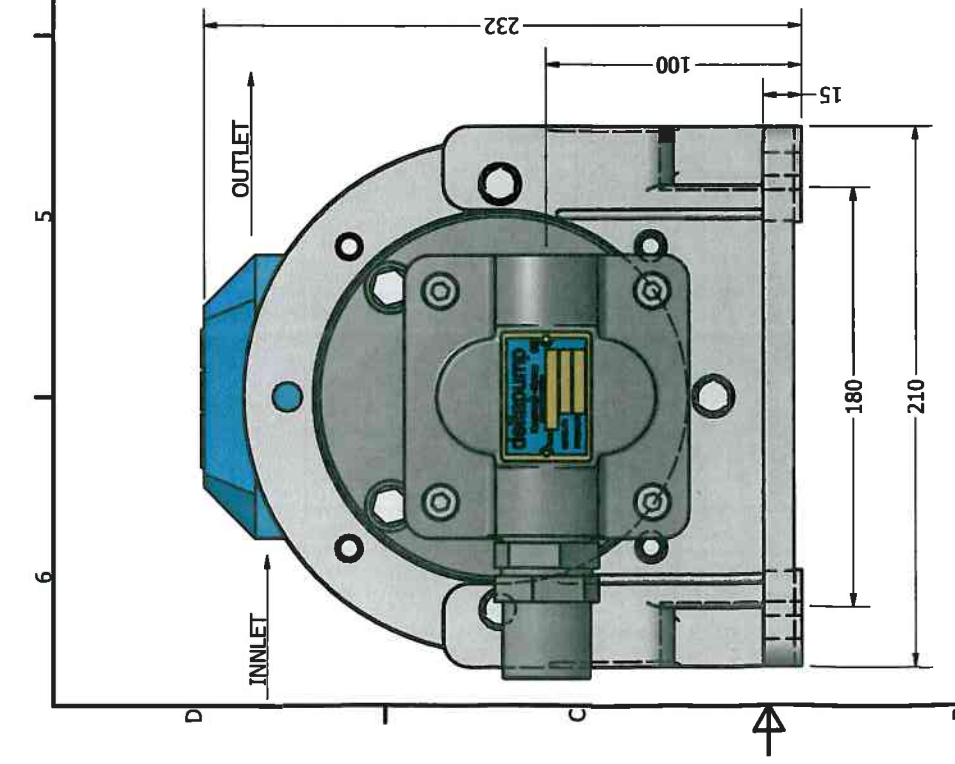
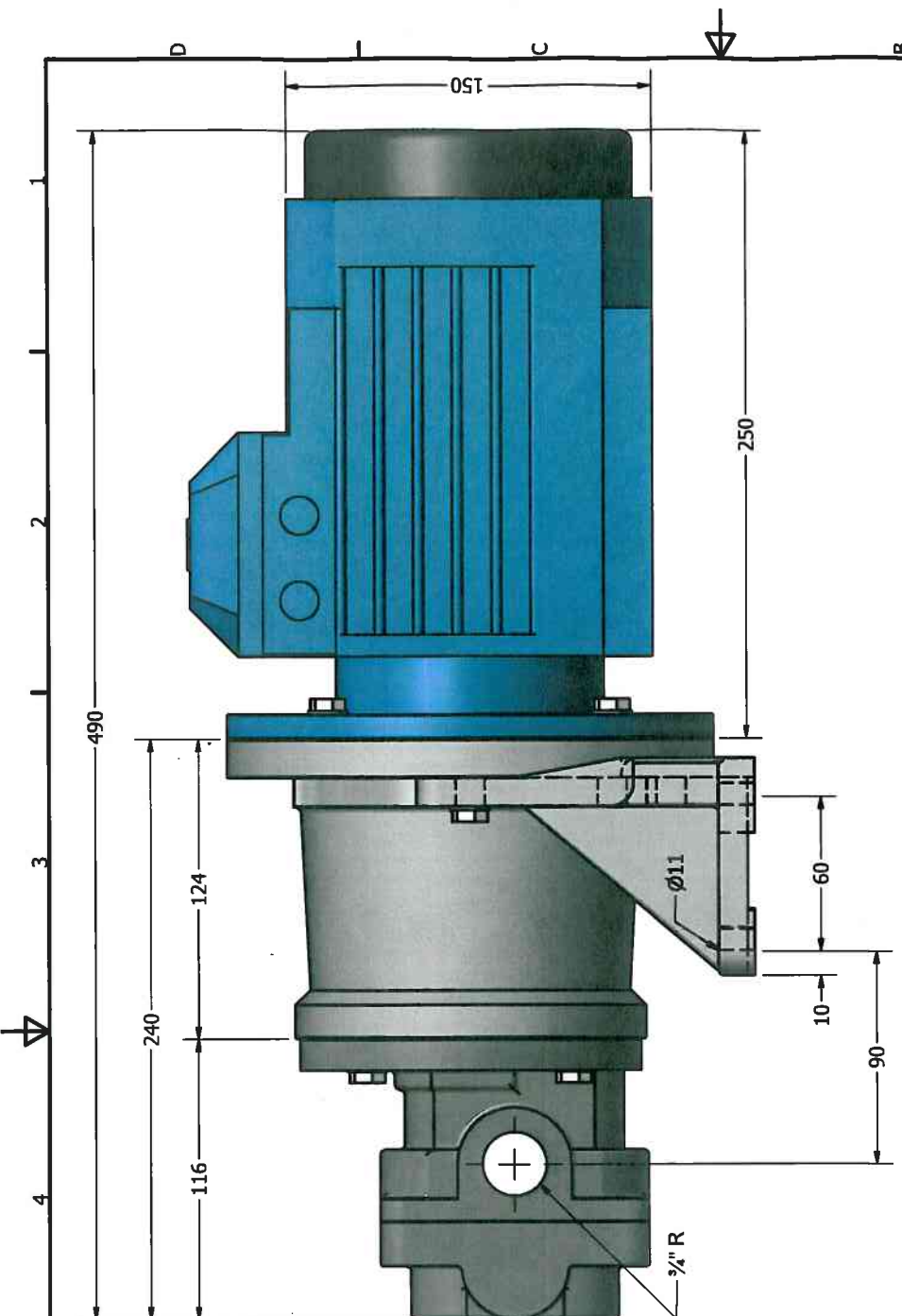
Arbeidsmetode; skru ut de aktuelle bolter. Pumpe/ el. motor settes i ønsket posisjon – skru til boltene igjen. I tillegg til dette, kan fot på brakett også settes i 4 ulike posisjoner. Her må motor være tatt av før fot kan tilpasses.

Husk: Dersom pumpen har ventil(X), må denne stå på pumpens sugeside

Mange tilpassningsmuligheter, gir enklere montering

Fig. viser standard montering

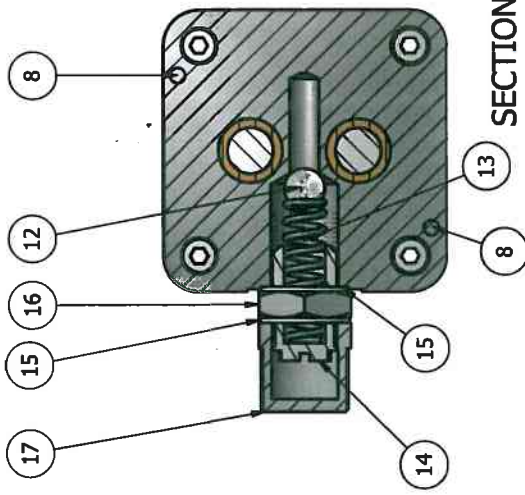




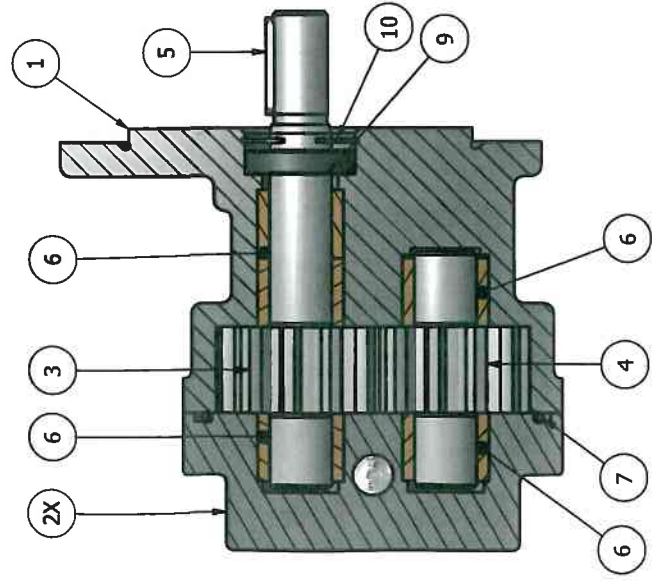
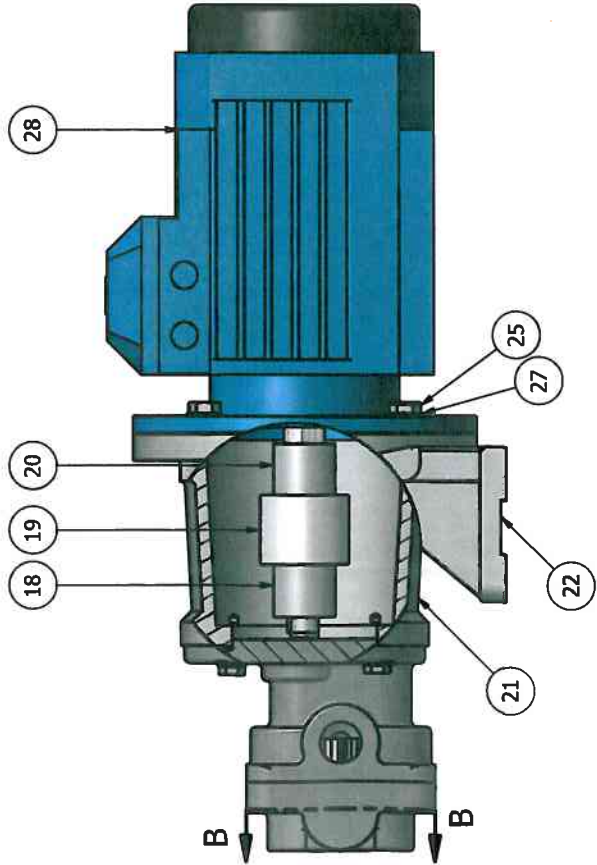
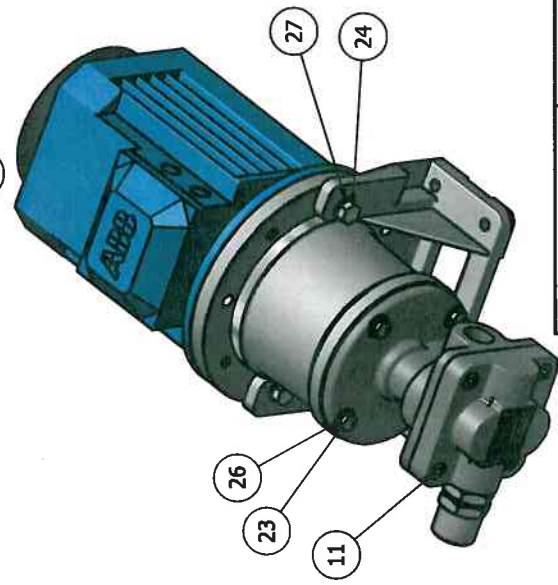
| | | | | | |
|--------------|--|------------|--|------------------------------------|-----|
| DRAWN | | 01.07.2009 | | delta pump www.deltapump.se | |
| Terje Runnan | | 01.07.2009 | | TITLE | |
| CHECKED | | 01.07.2009 | | MEASURE | |
| EH | | | | DELTAPUMP TYPE 589X W/ SAFETYVALVE | |
| QA | | | | MOUNTED WITH MOTOR SIZE 90 | |
| MFG | | | | SIZE | REV |
| APPROVED | | | | A3 | |
| | | | | IDWG NO | |
| | | | | Pumpe 589X 90 | |
| | | | | SCALE | |
| | | | | SHEET 1 OF 1 | |

- Pipe connection: 1/2" R (Both side)
- Pump and motor can both mounting in different position
- Optional mounting of pompe arrangement
- Direction of rotation: CCW
- Weight: Pump / bracket ca. 8,5 kg
- Weight: Complete arrangement ca. 21,5 kg

ALL MEASURE IS UNQUALIFIED



SECTION B-B



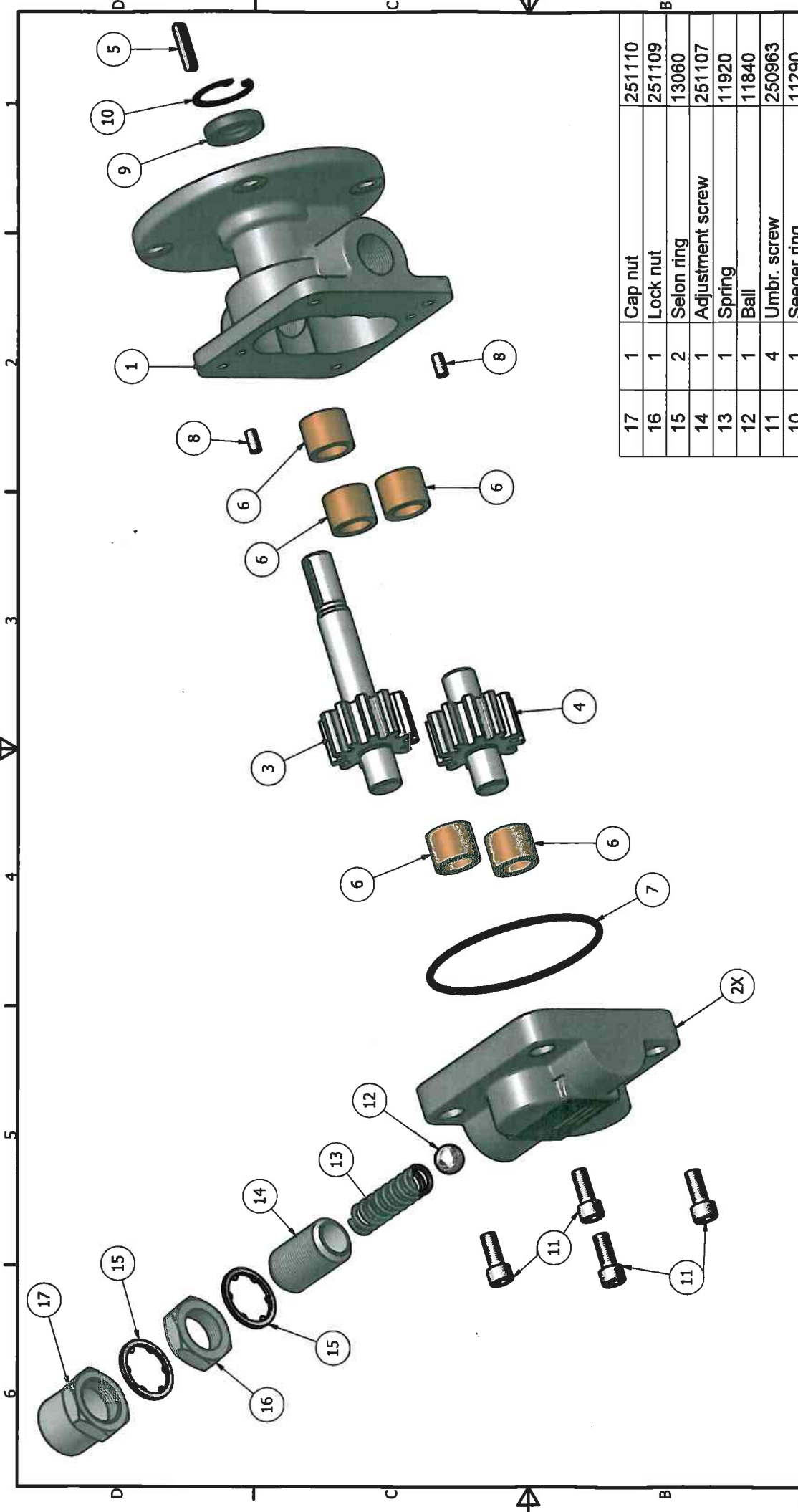
| ITEM | QTY | DESCRIPTION | ART. NR |
|------|-----|-------------------|---------|
| 28 | 1 | El. Motor | |
| 27 | 7 | Disc | 250835 |
| 26 | 4 | Disc | 10050 |
| 25 | 4 | Screw | 250951 |
| 24 | 3 | Screw w/ nut | 11400 |
| 23 | 4 | Screw | 250954 |
| 22 | 1 | Foot flange | 255233 |
| 21 | 1 | Bellhousing | 255232 |
| 20 | 1 | Hub (El. Motor) | 255230 |
| 19 | 1 | Coupling sleeve | 2507281 |
| 18 | 1 | Hub (Pump) | 254693 |
| 17 | 1 | Cap nut | 251110 |
| 16 | 1 | Lock nut | 251109 |
| 15 | 2 | Selon ring | 13060 |
| 14 | 1 | Adjustment screw | 251107 |
| 13 | 1 | Spring | 11920 |
| 12 | 1 | Ball | 11840 |
| 11 | 4 | Umbr. screw | 250963 |
| 10 | 1 | Seeger ring | 11290 |
| 9 | 1 | Seal ring | 10540 |
| 8 | 2 | Guide | 254256 |
| 7 | 1 | O-ring | 12630 |
| 6 | 5 | Bushing | 10520 |
| 5 | 1 | Key | 10930 |
| 4 | 1 | Idler shaft/gear | 252923 |
| 3 | 1 | Gear w/main shaft | 252922 |
| 2X | 1 | Cover | 250998 |
| 1 | 1 | Pump housing | 251025 |




| | | | | |
|--------------|------------|-------|---------------|-----|
| DRAWN | 12.10.2009 | | | |
| Terje Runnan | | | | |
| CHECKED | 20.10.2009 | | | |
| EH | | | | |
| QA | | | | |
| MFG | | | | |
| APPROVED | | | | |
| | | SIZE | DWG NO | REV |
| | | A3 | | |
| | | SCALE | Partlist 589X | |

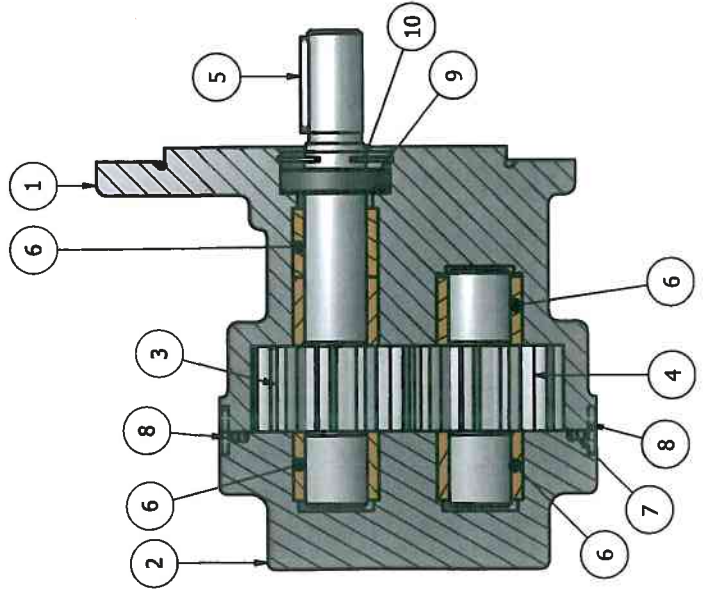
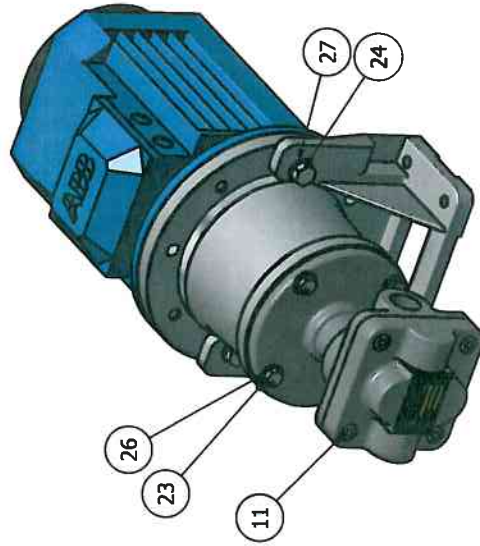
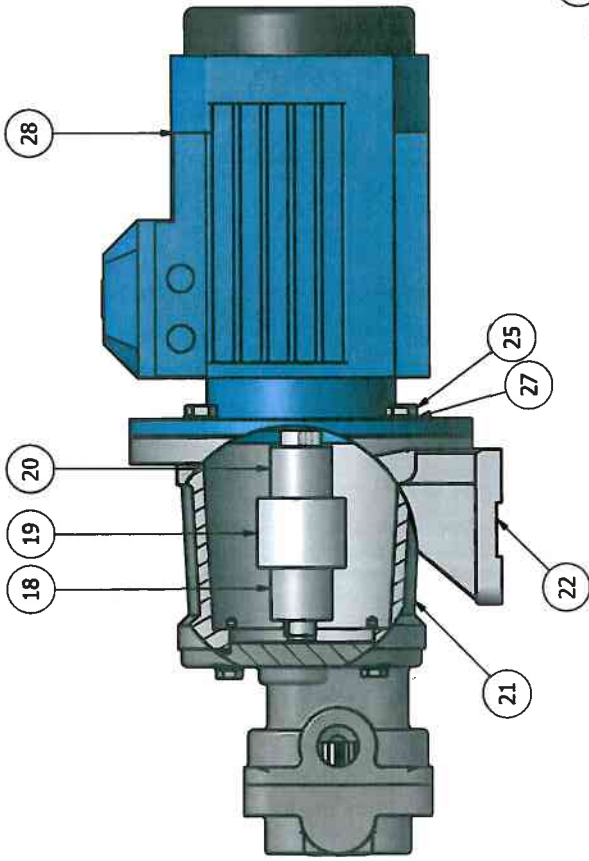
TITLE
PARTLIST
DELTAPUMP TYPE 589X WITH MOTOR

PARTS LIST



| ITEM | QTY | DESCRIPTION | ART. NR. |
|------|-----|--------------------|----------|
| 1 | 1 | Cap nut | 251110 |
| 1 | 1 | Lock nut | 251109 |
| 2 | 2 | Selon ring | 13060 |
| 1 | 1 | Adjustment screw | 251107 |
| 1 | 1 | Spring | 11920 |
| 1 | 1 | Ball | 11840 |
| 4 | 4 | Umbr. screw | 250963 |
| 1 | 1 | Seeger ring | 11290 |
| 1 | 1 | Seal ring | 10540 |
| 2 | 2 | Guide | 254256 |
| 1 | 1 | O-ring | 12630 |
| 5 | 5 | Bushing | 10520 |
| 1 | 1 | Key | 10930 |
| 1 | 1 | Idler shaft/gear | 252923 |
| 1 | 1 | Gear w/ main shaft | 252922 |
| 2X | 1 | Cover | 250998 |
| 1 | 1 | Pump housing | 251025 |

| | | | | |
|-----------------------|------------|---|---------------------------|--------------|
| DRAWN Terje Runnan | 12.10.2009 |  www.deltapump.no | REV | |
| | 20.10.2009 | | TITLE | |
| CHECKED EH | | PARTS LIST DELTAPUMP 589X | | |
| QA | | SIZE A3 | DWG NO Parts list 589X | REV |
| MFG | | SCALE | | |
| APPROVED | | | | SHEET 1 OF 1 |



| ITEM | QTY | DESCRIPTION | ART. NR |
|------|-----|-------------------|---------|
| 28 | 1 | El. Motor 90S-6 | 250653 |
| 27 | 7 | Disc | 250835 |
| 26 | 4 | Disc | 10050 |
| 25 | 4 | Screw | 250951 |
| 24 | 3 | Screw w/ nut | 11400 |
| 23 | 4 | Screw | 250954 |
| 22 | 1 | Foot flange | 255233 |
| 21 | 1 | Bellhousing | 255232 |
| 20 | 1 | Hub (El. Motor) | 255230 |
| 19 | 1 | Coupling sleeve | 2507281 |
| 18 | 1 | Hub (Pump) | 254693 |
| 11 | 4 | Umbr. screw | 250963 |
| 10 | 1 | Seeger ring | 11290 |
| 9 | 1 | Seal ring | 10540 |
| 8 | 2 | Guide | 254256 |
| 7 | 1 | O-ring | 12630 |
| 6 | 5 | Bushing | 10520 |
| 5 | 1 | Key | 10930 |
| 4 | 1 | Idler shaft/gear | 252923 |
| 3 | 1 | Gear w/main shaft | 252922 |
| 2 | 1 | Cover | 250996 |
| 1 | 1 | Pump housing | 251025 |

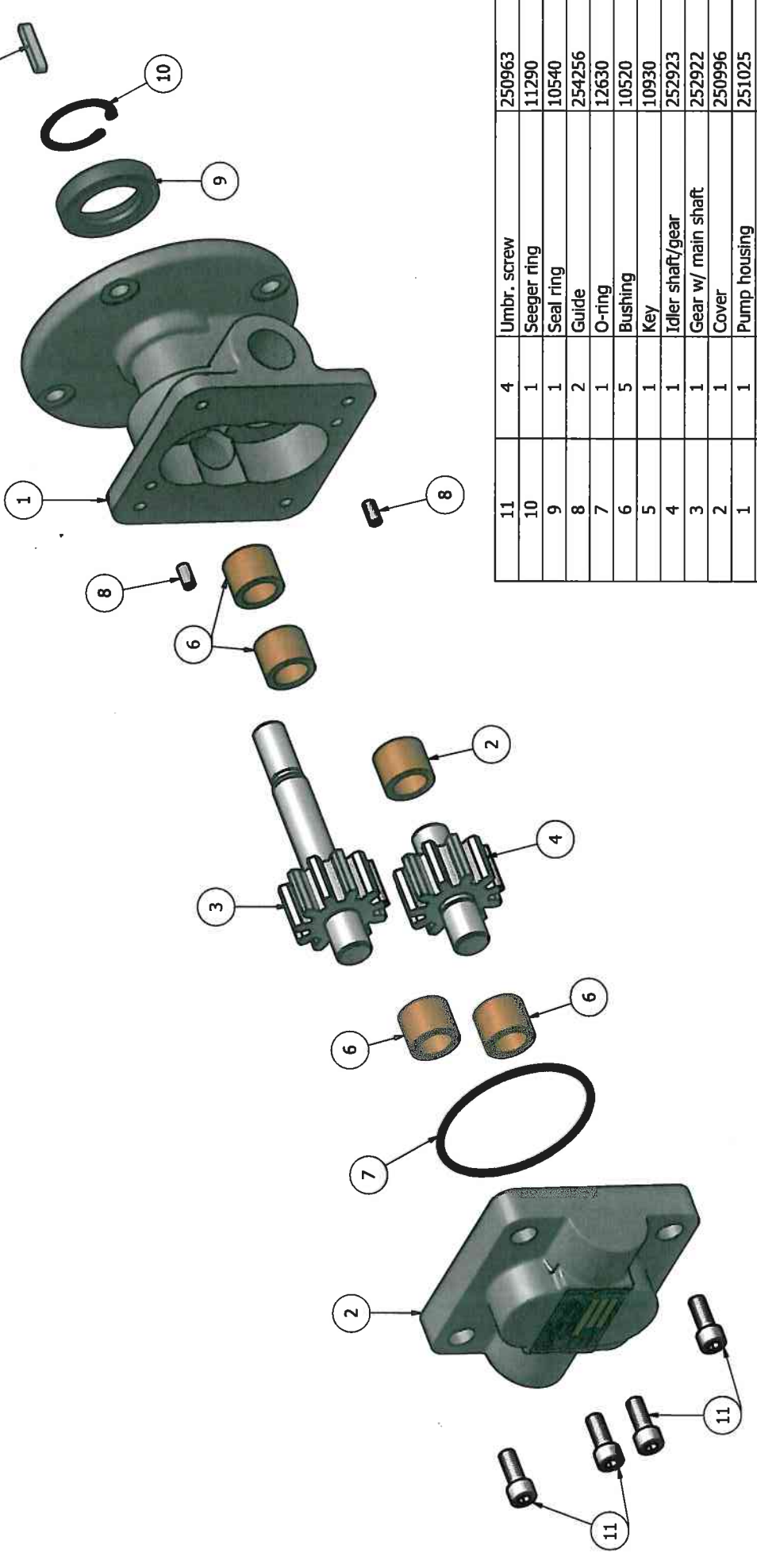
PARTS LIST



| | | |
|--------------|------------|-------|
| DRAWN | 09.10.2009 | TITLE |
| Terje Runnan | 09.10.2009 | |
| CHECKED | | |
| EH | | |
| QA | | |
| MFG | | |
| APPROVED | | |
| | | |
| | | |
| | | |
| | | |

PARTLIST
DELTAPUMP TYPE 589 WITH MOTOR

| | | |
|-------|--------------|-----|
| SIZE | DWG NO | REV |
| A3 | Partlist 589 | |
| SCALE | | |



| ITEM | QTY | DESCRIPTION | ART. NR |
|------|-----|--------------------|---------|
| 11 | 4 | Umbr. screw | 250963 |
| 10 | 1 | Seeger ring | 11290 |
| 9 | 1 | Seal ring | 10540 |
| 8 | 2 | Guide | 254256 |
| 7 | 1 | O-ring | 12630 |
| 6 | 5 | Bushing | 10520 |
| 5 | 1 | Key | 10930 |
| 4 | 1 | Idler shaft/gear | 252923 |
| 3 | 1 | Gear w/ main shaft | 252922 |
| 2 | 1 | Cover | 250996 |
| 1 | 1 | Pump housing | 251025 |

| | | | |
|-----------------------|--|-------------------------------|--------------------------|
| DRAWN Terje Runnan | | PARTS LIST | |
| CHECKED EH | | deltapump www.deltapump.no | |
| QA | | TITLE 20.10.2009 | |
| MFG | | PARTS LIST DELTAPUMP 589 | |
| APPROVED | | SIZE A3 | DWG NO Parts list 589 |
| | | SCALE | REV |
| | | SHEET 1 OF 1 | |